

# Repair Parts for XP Xtreme™ 36cc Lower

406879E

EN



## Important Safety Instructions

Read all warnings and instructions in manual 311762. Save those instructions.

### 25D239 Full Repair Kit - PTFE

Chemical Resistance and Higher Temperatures

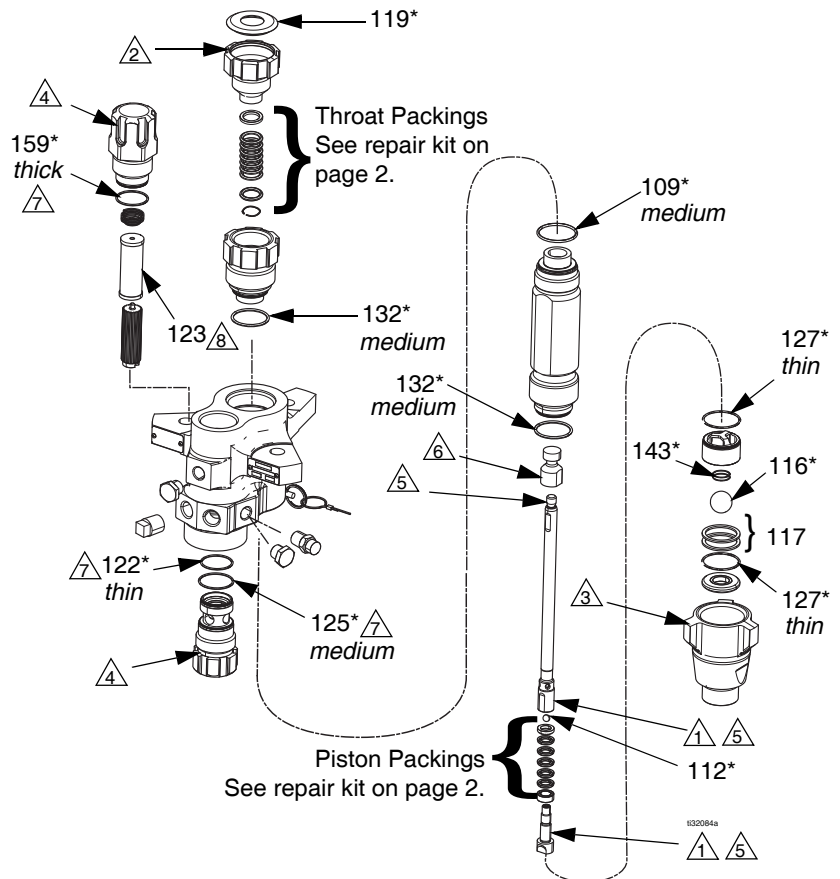
### 25D249 Full Repair Kit - Graco Formulated UHMWPE/PTFE

Chemical Resistance and Durability in Applications below 140° F (60° C)

## Bulk Pack Replacement Parts

Ref.	Part	Description	Qty.
103*	--	THROAT PACKINGS	1
104*	---	PISTON PACKINGS	1
109*	288067	O-RING, PTFE, top cylinder (10/pack)	1
112*	262485	BALL, piston, (3/pack)	1
116*	244899	BALL, inlet, (3/pack)	1
117	288064	SHIM, inlet, ball guide (9/pack)	2
119*	247393	PLUG, throat seal (10/pack)	1
122*	244895	O-RING, filter; thin, PTFE (10/pack)	1
123	224458	STRAINER, 30 mesh screen (2/pack)	1
	238436	STRAINER, 30 mesh screen (25/pack)	1
125*	262484	O-RING, filter; medium, PTFE (10/pack)	1
127*	288068	O-RING, foot valve; PTFE (10/pack)	2
132*	262512	O-RING, PTFE; cartridge and cylinder bottom	2
143*	124007	SPRING, foot valve	1
159*	262483	O-RING, filter, thick; PTFE (10 pack)	1

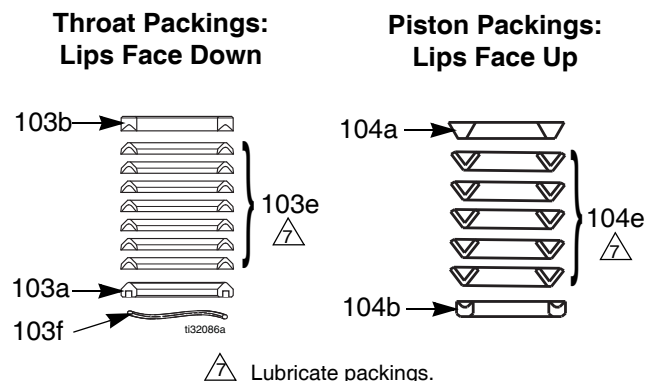
\* Included in Full Repair Kits.



- 1 Torque to 85 ft-lb (115 N•m).
- 2 Torque to 75 ft-lb (101 N•m).
- 3 Torque to 135-150 ft-lb (183-203 N•m).
- 4 Torque to 40-60 ft-lb (52-82 N•m).
- 5 Apply lubricant to threads before assembly.
- 6 Torque to 30-40 ft-lb (40-54 N•m).
- 7 Lubricate.
- 8 Pumps with short filters can be upgraded with kit 24F975.

## Full Repair Kit - PTFE - 25D239\*

(\*Includes items shown on front page)



## Throat Seal Repair Kit - PTFE - 25D146

### Includes:

Ref.	Description	Qty.
103a	GLAND, male, throat	1
103b	GLAND, female, throat	1
103e	V-PACKING, PTFE, throat (white)	7
103f	WAVE SPRING	1

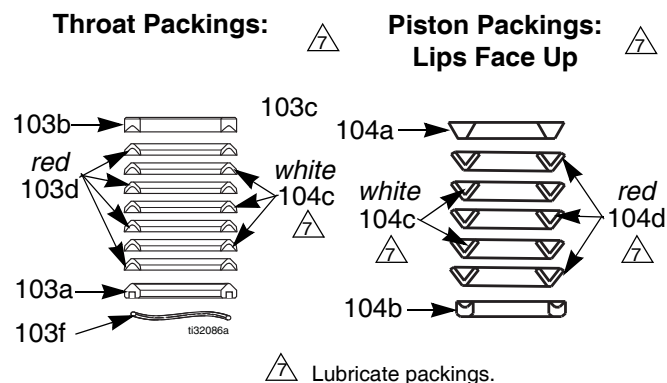
## Piston Seal Repair Kit - PTFE - 25D156

### Includes:

Ref.	Description	Qty.
104a	GLAND, male, throat	1
104b	GLAND, female, piston	1
104e	V-PACKING, PTFE, piston (white)	5

## Full Repair Kit - Graco Formulated UHMWPE/PTFE - 25D249\*

(\*Includes items shown on front page)



## Throat Seal Repair Kit - Graco Formulated UMPWPE/PTFE - 25D166

### Includes:

Ref.	Description	Qty.
103a	GLAND, male, throat	1
103b	GLAND, female, throat	1
103c	V-PACKING, PTFE, throat (white)	3
103d	V-PACKING, UHMWPE, throat (red)	4
103f	WAVE SPRING	1

## Piston Seal Repair Kit - Graco Formulated UHMWPE/PTFE - 25D180

### Includes:

Ref.	Description	Qty.
104a	GLAND, male, piston	1
104b	GLAND, female, piston	1
104c	V-PACKING, PTFE, piston (white)	2
104d	V-PACKING, UHMWPE, piston (red)	3

All written and visual data contained in this document reflects the latest product information available at the time of publication.  
Graco reserves the right to make changes at any time without notice.

For patent information, see [www.graco.com/patents](http://www.graco.com/patents).

Original instructions. This manual contains English. MM 406879

**Graco Headquarters:** Minneapolis  
**International Offices:** Belgium, China, Japan, Korea

**GRACO INC. AND SUBSIDIARIES • P.O. BOX 1441 • MINNEAPOLIS MN 55440-1441 • USA**  
Copyright 2010, Graco Inc. All Graco manufacturing locations are registered to ISO 9001.

[www.graco.com](http://www.graco.com)

Revision E, September 2018

## APPLICATION FAST SET

483 Avenue Lazare Ponticelli  
77220 Gretz-Armainvilliers  
Tel : 01 64 16 41 63 - Fax : 01 64 16 48 67  
[contact@afs-bicomposant.fr](mailto:contact@afs-bicomposant.fr)  
[www.afs-bicomposant.fr](http://www.afs-bicomposant.fr)