

Repair Parts for XP Xtreme™ 48cc Lower

406880E

EN



Important Safety Instructions

Read all warnings and instructions in manual 311762. Save those instructions.

25D240 Seal Full Repair Kit - PTFE

Chemical Resistance and Higher Temperatures

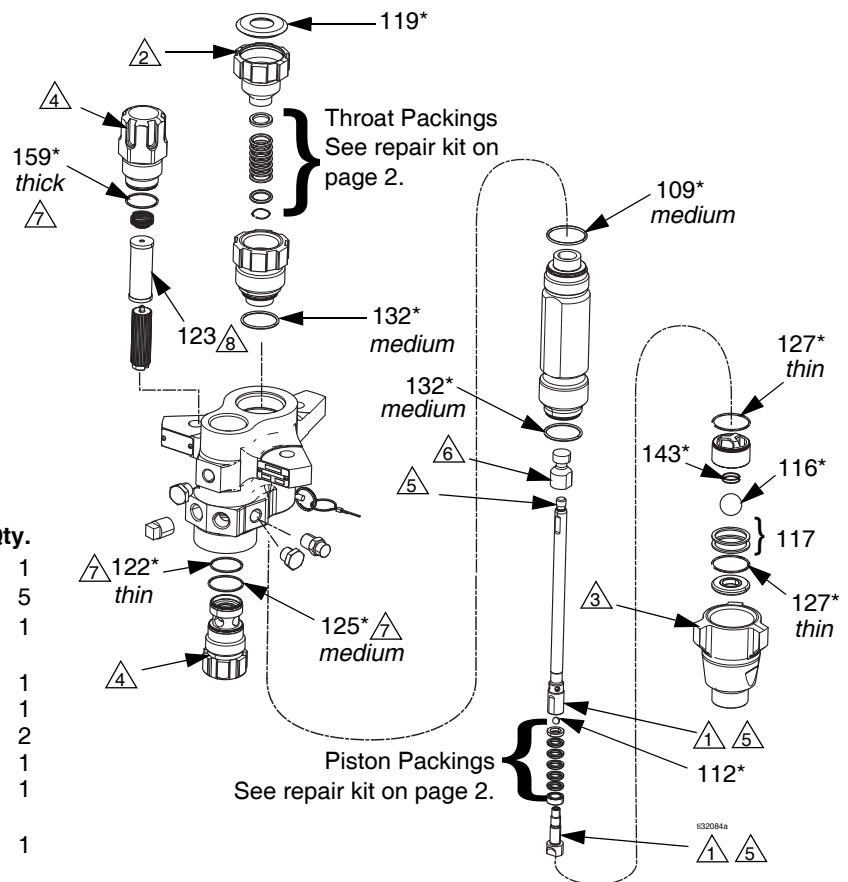
25D250 Seal Full Repair Kit - Graco Formulated UHMWPE/PTFE

Chemical Resistance and Durability in Applications Below 140° F (60° C)

Bulk Pack Replacement Parts

Ref.	Part	Description	Qty.
103*	---	THROAT PACKINGS	1
104*	---	PISTON PACKINGS	5
109*	288067	O-RING, PTFE, top cylinder (10/pack)	1
112*	262485	BALL, piston, (3/pack)	1
116*	244899	BALL, inlet, (3/pack)	1
117	288064	SHIM, inlet, ball guide (9/pack)	2
119*	247393	PLUG, throat seal (10/pack)	1
122*	244895	O-RING, filter; thin, PTFE (10/pack)	1
123	224458	STRAINER, 30 mesh screen (2/pack)	1
	238436	STRAINER, 30 mesh screen (25/pack)	1
125*	262484	O-RING, filter; medium, PTFE (10/pack)	1
127*	288068	O-RING, foot valve; PTFE (10/pack)	2
132*	262512	O-RING, PTFE, cartridge and cylinder bottom	2
143*	124007	SPRING, foot valve	1
159*	262483	O-RING, filter, thick; PTFE (10 pack)	1

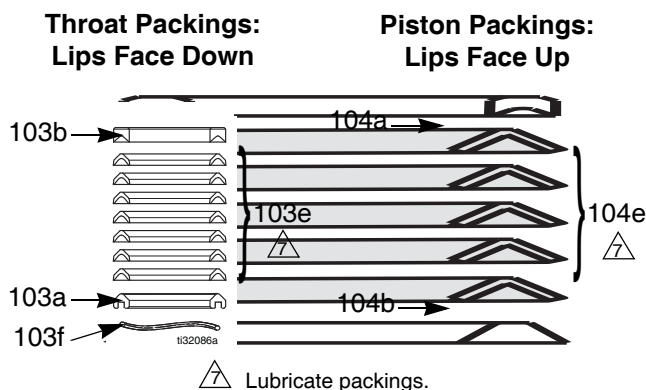
* Included in Full Repair Kits.



- 1 Torque to 85 ft-lb (115 N•m).
- 2 Torque to 75 ft-lb (101 N•m).
- 3 Torque to 135-150 ft-lb (183-203 N•m).
- 4 Torque to 40-60 ft-lb (52-82 N•m).
- 5 Apply lubricant to threads before assembly.
- 6 Torque to 30-40 ft-lb (40-54 N•m).
- 7 Lubricate.
- 8 Pumps with short filters can be upgraded with kit 24F975.

Full Repair Kit - PTFE - 25D240*

(*includes items shown on front page)



Throat Seal Repair Kit - PTFE - 25D147

Includes:

Ref.	Description	Qty.
103a	GLAND, male, throat	1
103b	GLAND, female, throat	1
103e	V-PACKING, PTFE, throat (white)	7
103f	WAVE SPRING	1

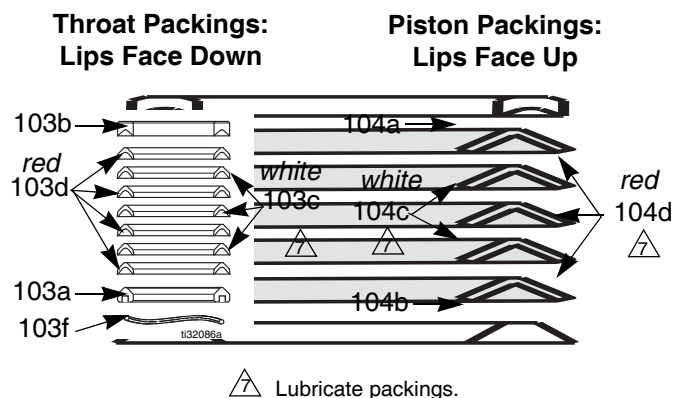
Piston Seal Repair Kit - PTFE - 25D157

Includes:

Ref.	Description	Qty.
104a	GLAND, male, piston	1
104b	GLAND, female, piston	1
104e	V-PACKING, PTFE, piston (white)	5

Full Repair Kit - Graco Formulated UHMWPE/PTFE - 25D250*

(*Includes items shown on front page)



Throat Seal Repair Kit - Graco Formulated UHMWPE/PTFE - 25D167

Includes:

Ref.	Description	Qty.
103a	GLAND, male, throat	1
103b	GLAND, female, throat	1
103c	V-PACKING, PTFE, throat (white)	3
103d	V-PACKING, UHMWPE, throat (red)	4
103f	WAVE SPRING	1

Piston Seal Repair Kit - Graco Formulated UHMWPE/PTFE - 25D181

Includes:

Ref.	Description	Qty.
104a	GLAND, male, piston	1
104b	GLAND, female, piston	1
104c	V-PACKING, PTFE, piston (white)	2
104d	V-PACKING, UHMWPE, piston (red)	3

All written and visual data contained in this document reflects the latest product information available at the time of publication.
Graco reserves the right to make changes at any time without notice.

For patent information, see www.graco.com/patents.

Original instructions. This manual contains English. MM 406880

Graco Headquarters: Minneapolis
International Offices: Belgium, China, Japan, Korea

GRACO INC. AND SUBSIDIARIES • P.O. BOX 1441 • MINNEAPOLIS MN 55440-1441 • USA
Copyright 2010, Graco Inc. All Graco manufacturing locations are registered to ISO 9001.

www.graco.com
Revision E, September 2018

APPLICATION FAST SET

483 Avenue Lazare Ponticelli
77220 Gretz-Armainvilliers
Tel : 01 64 16 41 63 - Fax : 01 64 16 48 67
contact@afs-bicomposant.fr
www.afs-bicomposant.fr