

High Pressure Regulator Kit

308372C
EN

For use on 2, 5, 10, and 15 gallon stainless steel Pressure Tanks, model no. 236143 through 236158, to change from low pressure regulation to high pressure regulation.

100 psi (7.0 bar) Maximum Working Pressure

Part No. 236680



Important Safety Instructions

Read all warnings and instructions in this manual and in your pressure tank manual before using the equipment. Save all instructions.

Installation

General

The Kit Includes following parts:

Ref. No.	Part No.	Description	Qty.
1	104267	REGULATOR, air; 0-125 psi	1
2	160430	GUAGE, air pressure; 0-100 psi	1
3	100361	PLUG, pipe, hdls; 1/2 npt	1
4	112538	ELBOW, street, 90; 1/8 npt(f) x 1/4 npt(m)	1
5	159239	NIPPLE, reducing; 1/2 to 3/8 npt	1
6	155665	ADAPTER, union, str swivel; 3/8-3/8	1

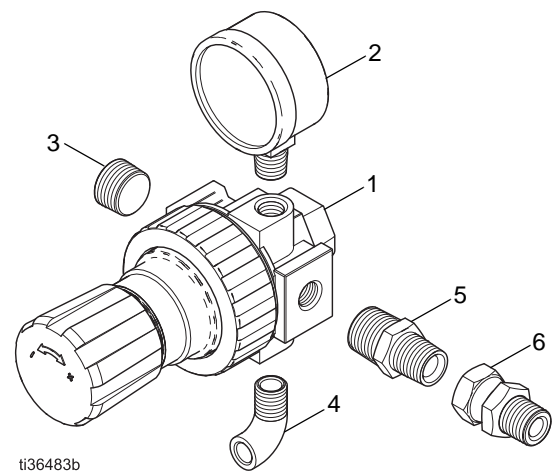


FIG. 1

Pressure Relief Procedure

WARNING

This equipment stays pressurized until pressure is manually relieved. Always relieve pressure in the tank before checking or servicing any part of the spray system, before loosening or removing the pressure tank cover or fill port, and whenever you stop spraying. This reduces the risk of serious injury, including splashing fluid in the eye or on the skin and moving parts.

1. Shut off the air supply to the tank by closing the air inlet valve (8).
2. Open the drain cock fitting (9) by turning it counter-clockwise.
3. Wait until no air is escaping through the drain cock fitting before removing the cover or opening the fill port.
4. Leave the drain cock fitting (9) open until you have reinstalled the cover or fill port.

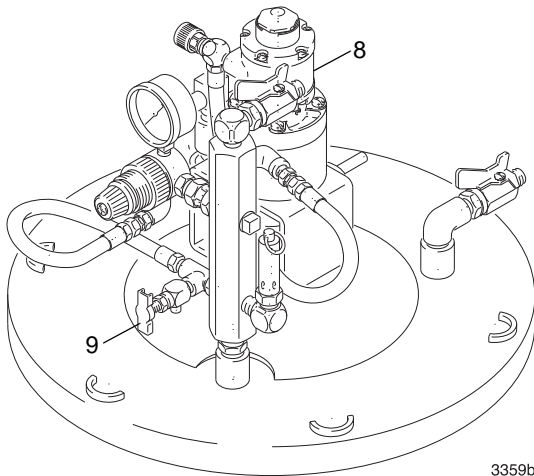
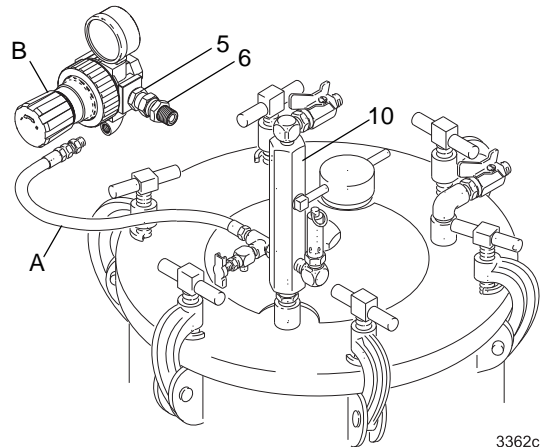


FIG. 2

3359b

Installing the High Pressure Regulator Kit

1. Follow the **Pressure Relief Procedure**.
2. Disconnect hose (A) and swivel fitting (6) to remove the low pressure regulator.
3. Remove old swivel fitting (6) from manifold (10).
4. See FIG. 3. Apply an anerobic pipe thread sealant to the male threads of the adapter (6), but not to the threads of the reducing nipple (5).
5. See FIG. 3. Attach the adapter (6) to the top of the pressure tank air inlet manifold (10).
6. Connect the regulator assembly (B) to adapter (6).
7. Connect the air hose (A) to elbow (4).



3362c

FIG. 3

APPLICATION FAST SET

483 Avenue Lazare Ponticelli
 77220 Gretz-Armainvilliers
 Tel : 01 64 16 41 63 - Fax : 01 64 16 48 67
 contact@afs-bicomposant.fr
 www.afs-bicomposant.fr