

GENUINE GRACO PARTS AND ACCESSORIES



245145 and 17N075 SAMPLING VALVE REPAIR KITS

245145: For valves; part no.'s 245143, 248191, and 244683; used on ProMix™ Easy, Xtreme Mix™ 185, ProMix™ II Proportioners, Xtreme Mix™ and Xtreme Lowers

406598D

17N075: For valve part no. 24Y850; used on Plural Component Mix Manifold (Acid)

EN



Important Safety Instructions

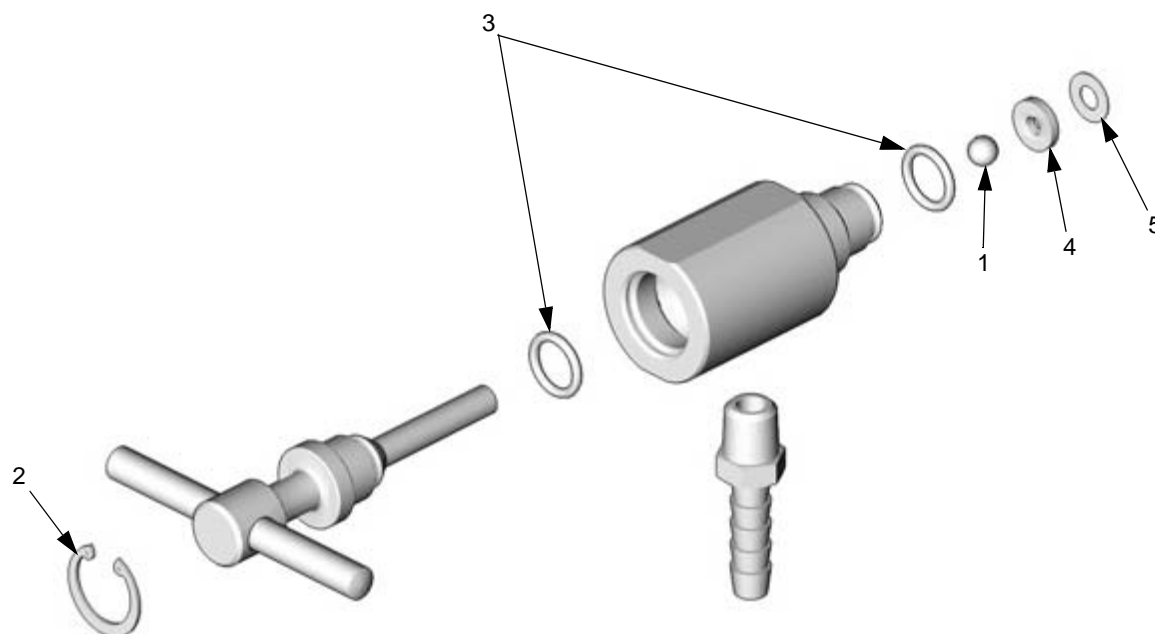
Read all warnings and instructions in this manual.
Save these instructions.

245145 Sampling Valve Repair Kit

Ref.	Part No.	Description	Qty.
1	107536	BALL; carbide	1
2	110082	RING, retaining	1
3	111457	O-RING; PTFE	2
4	183548	SEAT, valve	1
5	187060	GASKET	1

17N075 Sampling Valve Repair Kit (Acid)

Ref.	Part No.	Description	Qty.
1	16W172	BALL; sst	1
2	110082	RING, retaining	1
3	111457	O-RING; PTFE	2
4	17H569	SEAT, valve; 17-4 sst	1
5	15G250	GASKET	1



TI5010A

Graco Information

For the latest information about Graco products, visit www.graco.com.

For patent information, see www.graco.com/patents.

TO PLACE AN ORDER, contact your Graco distributor or call to identify the nearest distributor.

Phone: 612-623-6921 **or Toll Free:** 1-800-328-0211 **Fax:** 612-378-3505

*All written and visual data contained in this document reflects the latest product information available at the time of publication.
Graco reserves the right to make changes at any time without notice.*

Original instructions. This manual contains English. MM 406598

Graco Headquarters: Minneapolis

International Offices: Belgium, China, Japan, Korea

GRACO INC. AND SUBSIDIARIES • P.O. BOX 1441 • MINNEAPOLIS MN 55440-1441 • USA
Copyright 2004, Graco Inc. All Graco manufacturing locations are registered to ISO 9001.

www.graco.com

Revision D, September 2016



Application Fast Set

483, Avenue Lazare Ponticelli

77220 Gretz-Armainvilliers

Tel : 01 64 13 41 63 ; Fax : 01 64 13 48 67

www.afs-bicomposant.fr